



DHK600 INSTRUCTIONS

DISASSEMBLY

To remove pins and bushings on the top driver side or passenger side:

- Knock out the pin with a long punch and hammer.
(See photo 1)
- Remove the upper and lower bushings by forcing them out from opposite sides.
(See photo 2)

To remove pins and bushings on the bottom driver side or passenger side:

- Remove the two screws on the detent spring while holding the spring with long nosed pliers.
(See photo 3 and 6)



Photo 1



Photo 2

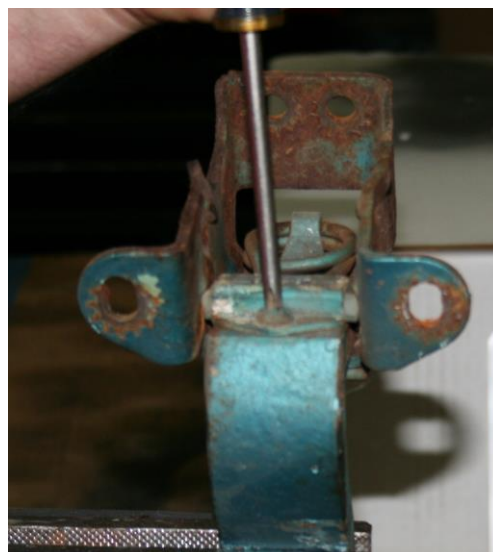


Photo 3

- Knock out the pin with a long punch and hammer.
(See photo 4)
- Remove the top and bottom bushings, by forcing them out from opposite sides.
(See photo 5)

ASSEMBLY

Driver top hinge:

- Install new bushings. Drive bushing straight and square with hinge.
(See photo 7)
- Grease the bushings before pin installation. Drive pin down into hinge flush with hinge, flange up. (See photo 8)



Photo 4



Photo 5



Photo 6

Driver bottom hinge:

- Drive bushing straight and square with hinge. (See photo 7)
- Grease bushing before pin installation. Drive pin down into hinge. (See photo 9)

DETENT INSTALLATION

Bottom hinge left and right:

- Grease detents before installing. Install detents by compressing coil spring with long nose pliers. (See photo 6)
- Install 2 screws holding detent spring. (See photo 10)



Photo 10



Photo 7

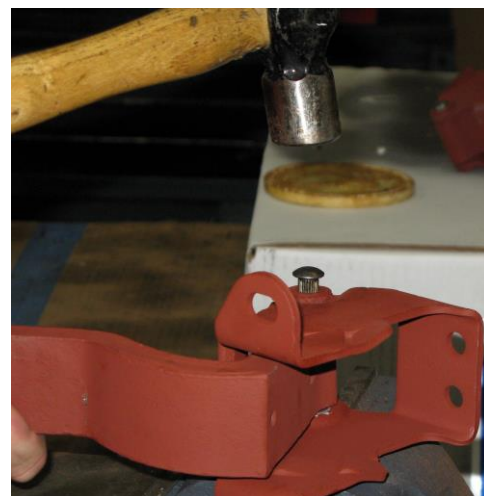


Photo 8



Photo 9